

Model Numbers

- ISPA-18
- ISPA-18-2
- ISP-J-SP
- ISP-J-SP-2
- ISP-18-W
- ISP-J-W-16
- ISP-J-W-13



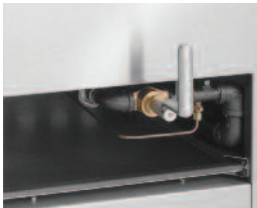
3-ring burner for high performance cooking.



3-ring burner has 2 adjustable gas valves to control inner and outer rings.



Anti-clogging jet burners produce a cone shaped intense flame.



Steel lever offers maximum control for jet burner.



ISPA-18
Stock Pot Range



ISP-J-SP
Hi-Temp Stock Pot Range



ISP-18-W
Tempura Wok Range



ISP-J-W13
Mandarin Wok Range

THREE RING BURNER - 90,000 BTU (26 KW) total output per burner.

- Heat selections from simmer to high heat
- Burner utilizes two adjustable gas valves for the inner and outer rings.

JET BURNER - Anti-clogging 18 tip jet burner, 125,000 BTU (37 KW).

- Intense cone shaped heat.
- Burner has a continuous pilot for instant ignition.
- "L" shaped gas control valve for maximum control.

WOK TOPS - Tempura and Mandarin wok styles are available.

- Wok top is all welded stainless steel.
- Welded in 8" (203 mm) h cylinder concentrates and intensifies heat.
- Top removes for cleaning and has a roll front edge for easy loading.
- 13" and 16" (330 and 406 mm) wok top sizes available.
- Mandarin style has a gradual slope design to reduce spill-overs.

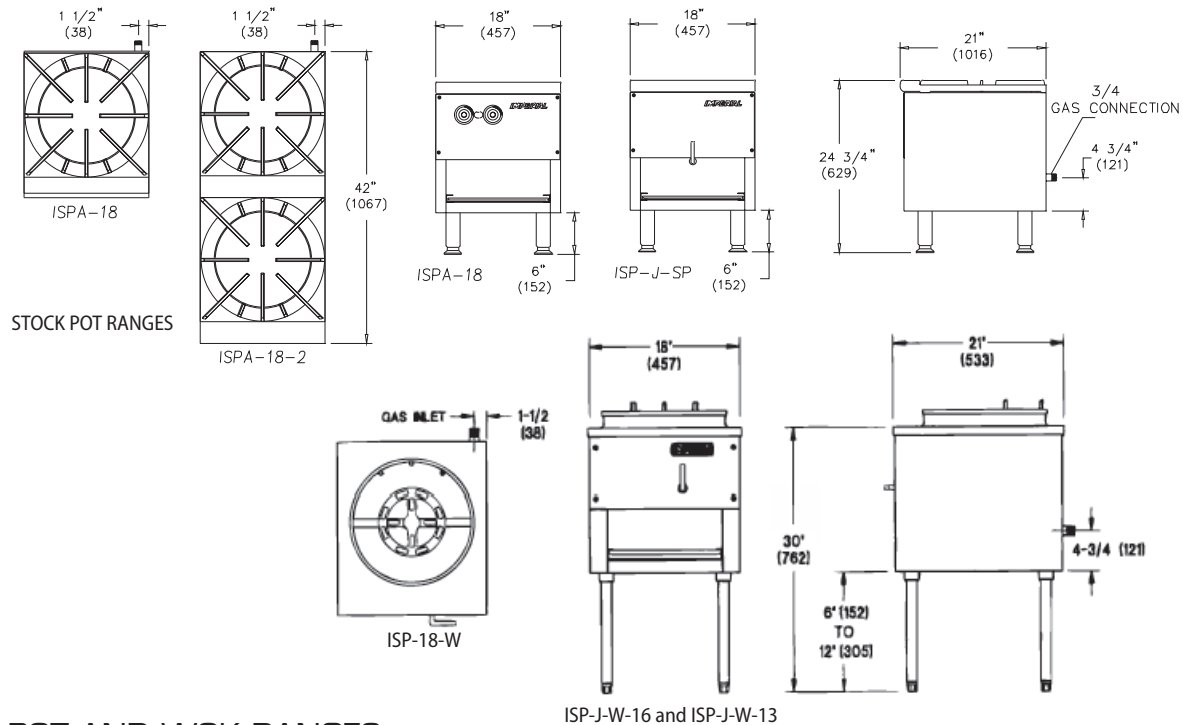
TOP GRATE - Reinforced cast iron construction.

- Built-in rolled front is easy to load.
- Grate removes for cleaning.

EXTERIOR FEATURES - Stainless steel front and sides with welded and finished seams.

- Stainless steel cabinet base for storage.
- Knobs are cast aluminum with Valox™ heat protection grip.
- Full width drip pan.
- Heavy duty legs with adjustable feet.
- One year parts and labor warranty.





STOCK POT AND WOK RANGES

MODEL	NUMBER OF BURNERS AND DESCRIPTION	GAS OUTPUT BTU	(KW)	SHIP WEIGHT (KG)	LBS
STOCK POT RANGE					
ISPA-18	(1) 3-Ring Burner	90,000	(26)	(57)	125
ISPA-18-2	(2) 3-Ring Burners	180,000	(53)	(114)	250
HI-TEMP STOCK POT RANGE					
ISP-J-SP	(1) Anti-Clogging Jet Burner	125,000	(37)	(57)	125
ISP-J-SP-2	(2) Anti-Clogging Jet Burners	250,000	(73)	(114)	250
TEMPURA WOK RANGE					
ISP-18-W	(1) 3-Ring Burner	90,000	(26)	(57)	125
MANDARIN WOK RANGES					
ISP-J-W-16	(1) Anti-Clogging Jet Burner	125,000	(37)	(57)	125
ISP-J-W-13	(1) Anti-Clogging Jet Burner	125,000	(37)	(57)	125

Measurements in () are metric equivalents.

MODEL	DIMENSIONS	CRATED DIMENSIONS
ISPA-18	18" w x 21" d x 24-3/4" h (457 x 533 x 629 mm)	20-1/2" w x 25" d x 22" h (521 x 635 x 559 mm)
ISPA-18-2	18" w x 42" d x 24-3/4" h (457 x 1067 x 629 mm)	20-1/2" w x 46" d x 22" h (521 x 1168 x 559 mm)
ISP-J-SP	18" w x 21" d x 24-3/4" h (457 x 533 x 629 mm)	20-1/2" w x 25" d x 22" h (521 x 635 x 559 mm)
ISP-J-SP-2	18" w x 42" d x 24-3/4" h (457 x 1067 x 629 mm)	20-1/2" w x 46" d x 22" h (521 x 1168 x 559 mm)
ISP-18-W	18" w x 21" d x 30" h (457 x 533 x 762 mm)	20-1/2" w x 25" d x 22" h (521 x 635 x 559 mm)
ISP-J-W-16	18" w x 21" d x 30" h (457 x 533 x 762 mm)	20-1/2" w x 25" d x 22" h (521 x 635 x 559 mm)
ISP-J-W-13	18" w x 21" d x 30" h (457 x 533 x 762 mm)	20-1/2" w x 25" d x 22" h (521 x 635 x 559 mm)

CLEARANCE REQUIREMENTS

For use only on non-combustible floors with legs or casters. 0" clearance from non-combustible side and rear walls. Provide 15" (381 mm) minimum clearance from combustible side walls and 17" (432 mm) clearance from combustible wall at rear.

MANIFOLD PRESSURE	MANIFOLD SIZE
NATURAL GAS	5.0" W.C.
PROPANE GAS	10.0" W.C.
	3/4"

Specify elevation, if over 2,000 ft.

OPTIONS AND ACCESSORIES

STOCK POT RANGES

- Extra Reinforced cast iron grate
- Additional control for 3-ring burner
- Extra 13" (330 mm) or 16" (406 mm) stainless steel wok top
- Interchangeable top with ISP-18-W wok cylinder
- Side-by-side range orientation in lieu of front-to-back (available at an additional charge)
- Quick disconnect and flexible gas hose
- 6" (152 mm) casters, set of 4, 2 with brakes
- 6" (152 mm) casters, set of 6, 2 with brakes (for models ISPA-18-2 and ISP-J-SP-2)

WOK RANGES

- Interchangeable top with ISPA-18 reinforced cast iron grate
- 13" (330 mm) stainless steel wok top
- 16" (406 mm) stainless steel wok top
- Quick disconnect and flexible gas hose
- 6" (152 mm) casters, set of 4, 2 with brakes

